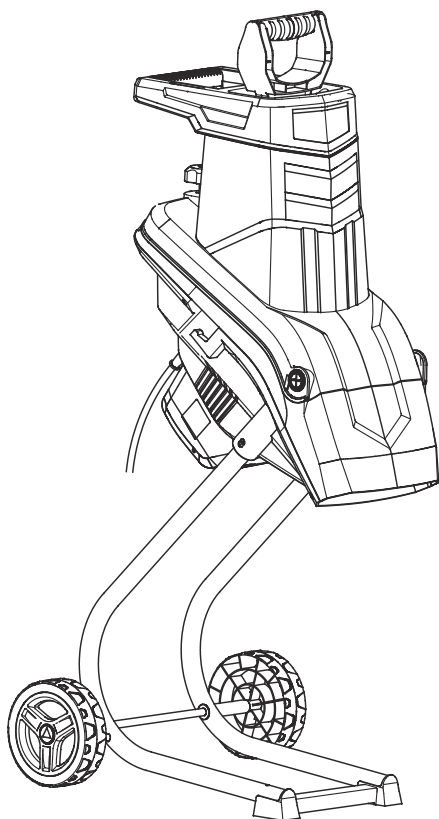


AIVOLT IMPACT SHREDDER

ORIGINAL INSTRUCTIONS



Please contact our after-sales team If you need any help: aivolt.official@gmail.com

FOR YOUR SAFETY
PLEASE READ THESE INSTRUCTIONS CAREFULLY
AND RETAIN THEM FOR FUTURE USE.

WARNING SYMBOLS

The following warning symbols appear throughout this manual and indicate the appropriate safety measures you should take when operating and maintaining the rotavator.



Before any use, refer to the corresponding paragraph in the present manual.

IPX4

Protection class



Do not expose to rain.



Conforms to European standards.



Conforms to UK standards



Wear ear protection.



Wear eye protection.



Wear protective gloves.



Warning: Rotating blade. Keep hands and feet away from the mouth of the hopper and output opening. The blade will continue to rotate for a short while after the machine has been turned off.



Switch off and remove plug from mains before adjusting, cleaning or if the cord is entangled or damaged.



Guaranteed sound power level.



Always wait until all the moving parts of the product have come to a complete stop before touching them.



Do not use as a step.



Objects thrown by the product could hit the user or other bystanders. Always ensure that other people and pets remain at a safe distance from the product when it is in operation. In general, children must not come near the area where the product is.

GENERAL SAFETY

- 1. This appliance can be used by children aged from 8 years and above and persons with reduced physical, sensory or mental capabilities or lack of experience and knowledge if they have been given supervision or instruction concerning use of the appliance in a safe way and understand the hazards involved. Children shall not play with the appliance. Cleaning and user maintenance shall not be made by children without supervision.
- 2. Never operate the machine while people, especially children, or pets are nearby.
- 3. Never allow children or other persons who have not read and understood this instruction manual and who are unfamiliar with the shredder to use the product. Refer to local bylaws and regulations regarding the minimum age for using the shredder.

BEFORE USE

- 1. Never use the product with other persons or animals in the work area.
- 2. Always wear safety glasses and ear defenders when using the product.
- 3. Appropriate protective clothing such as sturdy footwear, long trousers and gloves should be worn while operating the product. Do not wear loose-fitting clothing. or clothes with dangling cords or belts. Do not use the product while barefoot or wearing sandals.
- 4. Only use the product in the open (that is, away from walls

and other structures). Make sure that the product is placed on a firm, level surface. The product must only be used in the upright position.

5. Never use the product on a paved or gravel surface. The surface may become damaged by material ejected from the product.
6. Check that all the nuts bolts and other fastenings are tight. Covers must be fastened properly and in good working order. Replace any damaged or illegible stickers before commencing work.
7. Always inspect the connection and extension cable for signs of damage or ageing before use. If the cable is damaged, it must be disconnected immediately from the mains. **DO NOT TOUCH THE CABLE OR CONNECTION UNTIL THE CABLE HAS BEEN ISOLATED FROM THE MAINS.** Never use the product if the mains cable is damaged or worn.
8. Only use replacement parts and accessories that are approved by the manufacturer or retailer.
9. Never leave the product unattended while it is switched on and store it in a dry place out of children's reach.
10. The product should only be connected to a 230 V, 50 Hz mains outlet protected by a 30 mA residual current device (RCD).

WHILE WORKING

1. Make sure that the hopper is empty before switching the product on.
2. Keep your head, hair and other body parts away from the mouth of the hopper.

3. Do not touch any moving parts of the product until it has been disconnected from the power supply and the moving parts have come to a complete standstill.
4. Avoid any abnormal posture when using the product. Stand on the same level as the feet/wheels of the shredder.
5. When feeding material into the shredder, be careful not to introduce pieces of metal stones bottles cans or other foreign objects.
6. Never operate the product if any of its safety devices is missing or damaged or without the collection box. Never operate the product with a damaged or worn extension cable.
7. Ensure that the product is switched off before attaching or removing the collection box.
8. Do not use the product in the rain or in bad weather.
9. Do not use the product when you are tired, distracted or under the influence of alcohol, medicine or other drugs. Always take a break when you need one. Always switch the product off and disconnect it from the mains supply:
 - when it is not in use.
 - when it is being moved or left unattended.
 - before removing material that is jamming the blade.
 - when you are inspecting or cleaning it.
 - when carrying out maintenance or replacing accessories.
 - before it is lifted or moved.
10. Do not allow shredded material to accumulate near the ejection port. This might otherwise hinder proper ejection and force the material back into the hopper.
11. Never move or transport the product when it is switched on.
12. Keep hands and other body parts away from the mouth of

the hopper, the ejection port and any moving parts.

13. In the event of blockages in the hopper mouth or ejection port, switch the machine off and disconnect it from the power supply before clearing the blockage. Ensure that the blade and motor are free of debris to protect the motor when the machine is switched back on. Remember that the blade starts rotating as soon as the product is switched on.
14. Immediately switch off the power and wait until the machine has completely stopped, if the cutting mechanism hits a foreign object, or if the machine starts to make unusual noises or vibrate. Disconnect the machine from the mains and take the following steps before restarting and operating the machine:
 - check for damage.
 - replace or repair damaged parts.
 - tighten any loose parts.

Caution: The following instructions state how damage to the product and possible injury could be avoided:

1. Clean the ventilation slits regularly and follow the care and maintenance instructions.
2. Do not overload the machine -work only within the cutting capacity limits. Do not use the product for heavy work or for purposes for which it has not been designed.
3. Only switch the shredder off once the hopper is completely empty, otherwise the shredder may clog up and not be able to start.
4. Never try to repair the product unless you are qualified to do so. All service of the product other than that mentioned in this instruction manual should be carried out by qualified personnel and only using original spare parts.

ELECTRICAL SAFETY

Warning! The following instructions state how to avoid accidents and injuries due to electric shock.

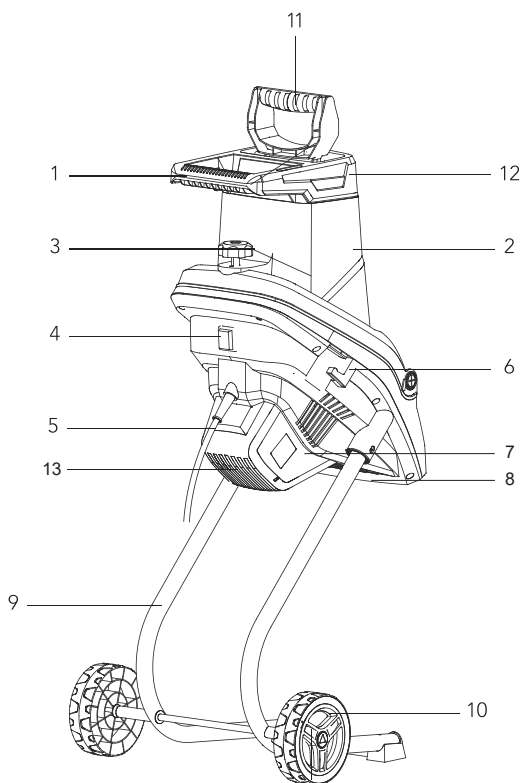
1. Damaged cables, connectors and plugs or extension leads not corresponding to specifications, must not be used. Unplug the product immediately if the mains cable or plug has been damaged. Under no circumstances must the damaged cable or plug be touched until the product has been disconnected from the power supply.
2. If the internal power cable or power socket of the product has been damaged, it must only be replaced by the manufacturer, authorized service facility or qualified tradesman. This is to prevent the risk of electric shock or fire.
3. Never use the product if the on/off switch is in any way damaged or malfunctioning. Repairs must only be performed by the manufacturer, an authorised repair agent or qualified electrician.
4. Any extension cables used must be suitable for outdoor use and have a rating of at least H07RN-F and a minimum conductor cross-sectional area of 1.5 mm² (e.g., a 3G 1.5 mm² cable).
5. If the extension lead has too small a conductor cross sectional area the machine's performance will be reduced considerably. For leads under 25 m in length a minimum conductor cross-sectional area of 1.5 mm² is required, for cables over 25 m in length the cross-sectional area must be at least 2.5 mm² (i.e., 3G 2.5 mm²). Always uncoil the entire extension cable and inspect it for damage before use.

6. Never unplug the extension cable from the wall socket or connector on the product by pulling the cable, always grip and pull the plug itself.
7. Keep the cable away from heat, oil, sharp edges and moving parts.

GENERAL VIEW

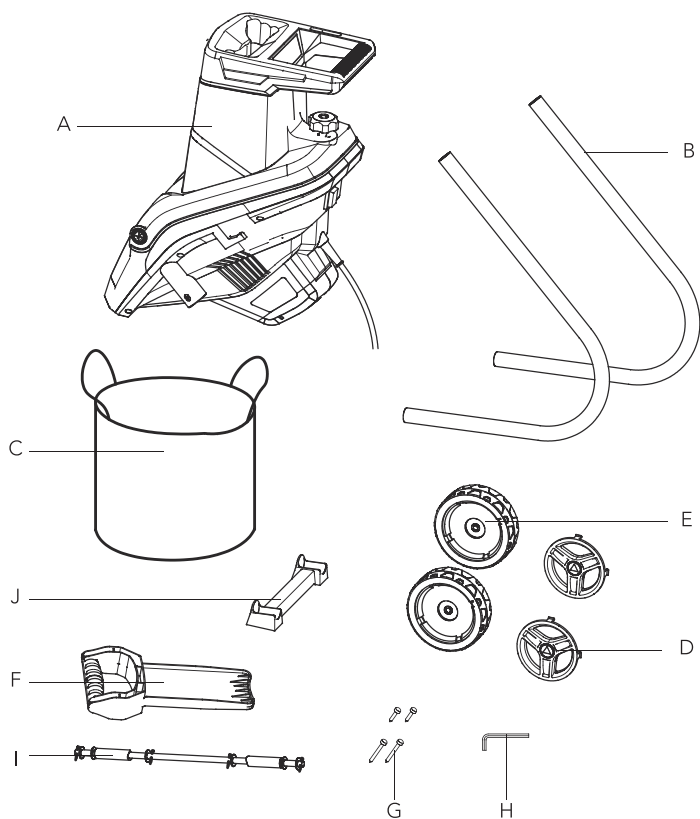
Parts of the shredder

1. Transport handle
2. Hopper
3. Locking knob
4. On/Off switch
5. Power cord
6. Debris bag hook
7. Motor housing
8. Discharge chute
9. Stand
10. Wheel
11. Plunger
12. Feeding funnel
13. Ventilation slot



GENERAL VIEW

- A. Shredder housing
- B. Stand
- C. Collection bag
- D. Wheel capsx2
- E. Wheels x2
- F. Plunger
- G. Screws x 4
- H. Hex key M8
- I. Axe (includes 4 x washers and 2 x split pins)
- J. Stand supporting



TECHNICAL SPECIFICATIONS EU

| | |
|------------------------------------|-------------------------|
| Model No.: | SDEG17-2500 |
| Rated voltage | 230-240V, 50Hz |
| Power | 2500(P40) |
| Collection bag | 50L |
| Max. cutting dia. | 45mm |
| No-load speed | 3600 rpm |
| Sound pressure level(LpA) | 97.5 dB(A),K=3.0 dB(A) |
| Measured sound power level (LwA) | 109.2 dB(A),K=3.0 dB(A) |
| Guaranteed sound power level (LwA) | 112dB(A) |
| Weight | 8.1kg |

TECHNICAL SPECIFICATIONS US

| | |
|-------------------|-----------|
| Model No.: | SDEG17 |
| Rated voltage | 120V/60Hz |
| Power | 15A |
| Collection bag | 50L |
| Max. cutting dia. | 45mm |
| No-load speed | 3600 rpm |
| Weight | 8.1kg |

INTENDED USE

This machine is designed for cutting of fibrous and woody garden waste for composting. This machine is not intended for shredding pieces of metal, rocks, bottles, cans, etc. or soft waste such as kitchen rubbish.

For safety reasons it is essential to read the entire instruction manual before first operation and to observe all the instructions therein.

This machine is intended for private domestic use only, not for any commercial trade use. It must not be used for any purposes other than those described.

ASSEMBLY



Caution! Before starting the appliance, check the protective devices and fastening elements for damage.

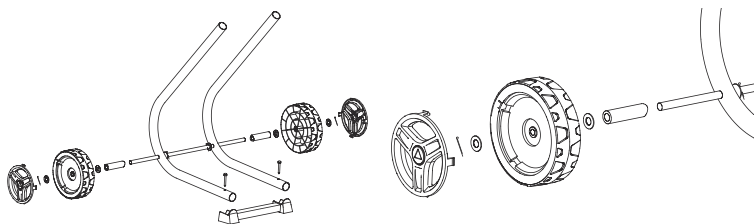
Do not use the appliance if it is damaged.

1. Inspect the material to be shredded before starting. Remove any objects that are not suitable for shredding or could entangle the blades [metal parts, stones, bottles, cans, etc].
2. Place the appliance on a firm level ground and do not move it during operation. Make sure the locking knob (3) is securely tightened.
3. Use the on/off switch (4) to switch the appliance on and wait until the motor has reached full speed.
4. Insert the shredding material into the hooper (2), but do not overload the shredder.
5. Make sure the shredded material can move down freely from the discharge chute (8).
6. Use the plunger (11) to push smaller material down to the blades.
7. Regularly clean your shredder from shredded material.

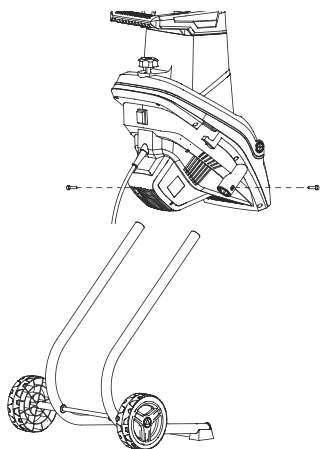
How do I assemble this product?

Please follow assembly instructions as below:

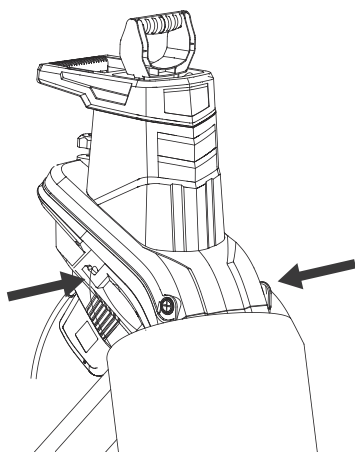
1. Open the packaging and remove the machine from package.
2. Remove the washers and split pins from the axle and fix the wheels as shown in the diagram below. Fix the stand supporting to stand with screws.



3. Insert the stand to the motor housing, align the holes on the housing and stand, and fix with the 2 assembly screws using suitable screwdriver.



4. Hang the debris bag onto the debris bag hook as shown below.



OPERATION

NOTE! Before using the machine, read the instructions thoroughly and acquaint yourself with the features of the machine.

Before inspecting or servicing any part of the machine, switch off, pull the plug from the mains and make sure that all moving parts have come to a complete stop.

1. Inspect the material to be shredded before starting. Remove any objects or debris that could be thrown, jammed or become entangled in the blades. Remove any soil from root balls. Foreign bodies like stones, glass, metals, fabrics, or plastics must not enter the in-feed chute, these could damage the blades.
2. Always place the machine on firm level ground. During operation, do not tilt or move.
3. Allow the cutting blades to reach full speed before feeding the material into the feeding funnel.
4. Use the machine to shred the following materials only:
Owing to the different shapes of branches, it is recommended to shred branches up to 40mm in diameter.
 - Waste from pruning bushes
 - Waste from trimming hedges
 - Plant material and other garden waste
 - Leaves and plant roots (remove soil from roots before shredding)
5. Do not put soft waste such as kitchen rubbish into the shredder.
6. Feed the material to be shredded into the corner of the hopper, if it is not too bulky, the material will be drawn in by the blades.
7. Only insert as much material so that the hopper does not become blocked.



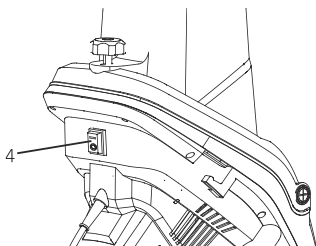
WARNING! Long material extending out from the machine could whip when being drawn in by the blades, therefore please keep a safe distance from the shredder.

8. Ensure the shredded material can fall freely from the discharge chute.
9. To make finer chippings the shredded material can be shredded for a second time.
10. Do not allow the shredded material to build up to a level where it blocks the discharge chute. If the material builds up too far it could reach the cutting blades and be thrown out of the hopper.
11. Organic material contains a large amount of water and sap that can stick to the shredder. To avoid this the material should be left for a few days to dry out.
12. If during cutting the blade stalls, stop the shredder immediately and disconnect it from the mains supply before investigating the cause.
13. Remove any jammed debris from the blades and examine them for any damage before re-commencing shredding.
14. If the blade has stalled for more than 5 seconds the safety overload switch will automatically switch the machine off. Allow the machine to cool down for at least 1

minute before re-starting. Push the overload switch first and then push on the On/ Off switch to re-start the machine.

15. If the cutting mechanism strikes any foreign object or if the shredder starts to make any unusual noise or vibration, immediately switch off and allow the cutting blades to stop. Pull the plug from the mains supply and take the following steps:
 - i) Inspect for damage.
 - ii) Replace or repair any damaged parts.
 - iii) Check for and tighten any loose parts.
16. If the shredder becomes clogged, switch off and allow the cutting means to stop. Pull the plug from the mains supply before cleaning debris.
17. Keep the motor cooling vents clear of debris and other accumulations to prevent damage to the motor or possible fire.
18. Switch off, allow the cutting blades to stop and pull the plug from the mains supply whenever you leave the work area.
19. Do not allow processed material to build up in the discharge zone; this may prevent proper discharge and can result in kickback of material through the feed intake opening.

Starting and Stopping the shredder



Make sure that the mains voltage matches the details on the type plate.

1. Connect the extension cable.
2. Turn the machine on to "I" using the on/off switch.
3. To switch off, move the on/off switch back to position "0".

Overload protection

If overloaded, e.g.. branches which are too thick, the machine switches off automatically.

To restart, allow the machine to cool and switch back on.

Restart lock

If the power supply is lost, the machine does not switch itself back on once the mains voltage is restored. To switch the machine back on, turn the on/off switch back to "I".

Removing blockages



Before any maintenance or cleaning work, turn the machine off, pull out the mains plug and wait for the blades to stop. There is a risk to life and limb through electric shock, fire and rotating blades.

- Ensure that the power cable is disconnected from the mains supply.
- Release the housing lock.
- Tilt the front section of the shredder's housing forwards.

You can also completely remove the front section of the housing and place it aside. To do so, loosen the housing lock and remove the front section of the housing upwards vertically.

- This gives you free access to the blades.
- You can now remove the blockage in the machine.



The machine features a safety switch.

The housing lock has to be tightened again by hand as otherwise the machine will not be able to be started later.



WARNING! NEVER slacken off the tightening knob without having turned off the On/Off switch and pulled the plug out of the socket.

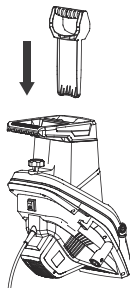


WARNING! The shredder will stop within 5 seconds after switching off.

Using the Plunger

A plunger is provided to aid feeding less bulky material such as small twigs, leaves and other garden waste into the feed funnel.

1. Load the material into the feed funnel.
2. Insert the plunger into the feed funnel pushing the material onto the blade disc.
3. Wait until all the material has been shredded before adding more material.



NOTE: Your fingers must never enter the feed funnel.

NOTE: Never use the tool if the hopper is not fitted.

NOTE: Do not overreach.

Collect the shredded material

Shut-off the power unit before attaching or removing the bag.

You can use either the collection bag supplied or place the shredder on a tarpaulin sheet to catch the shredded material.

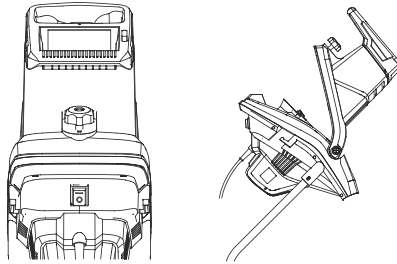
When using the collection bag, you need to fit the collection bag hooks onto the sides of the discharge chute.



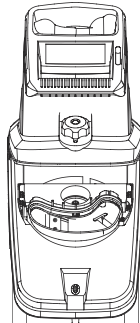
WARNING! The ventilation slots on the machine body must never be covered by the collection bag or shredded material.

Replace the blades

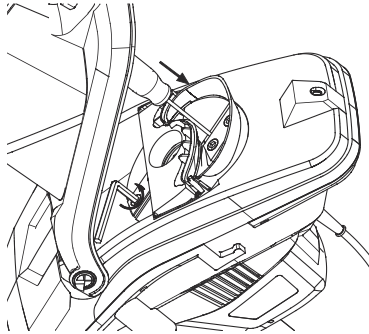
1. Ensure that the shredder is switched off and disconnected from the mains supply.
2. Remove the top feed assembly by unscrewing the locking knob securing it to the body of the machine.



3. The blades have two cutting edges. When the blades become worn, they can be reversed to use the second cutting edge.
4. It is recommended that work gloves be used when replacing the blades.



5. Lock the blade disc using hex spanner. Unscrew the two inner hexagonal headed screws and note the position of the cutting angle of the blade.
6. Remove the blade and rotate it through 180 degrees and fit the blade to the blade disc ensuring that the ground cutting edge is facing downwards.
7. Repeat this for the other blade.



When both cutting edges of the blade become worn, they must be replaced as a pair. The blades can be re-sharpened, but this must be done by an experienced person using an oil stone. We do not recommend this be done as the weight of each blade is critical to maintain the balance of the cutting disc. Any imbalance could cause damage to the machine and possible injury to the operator.

CARE AND MAINTENANCE

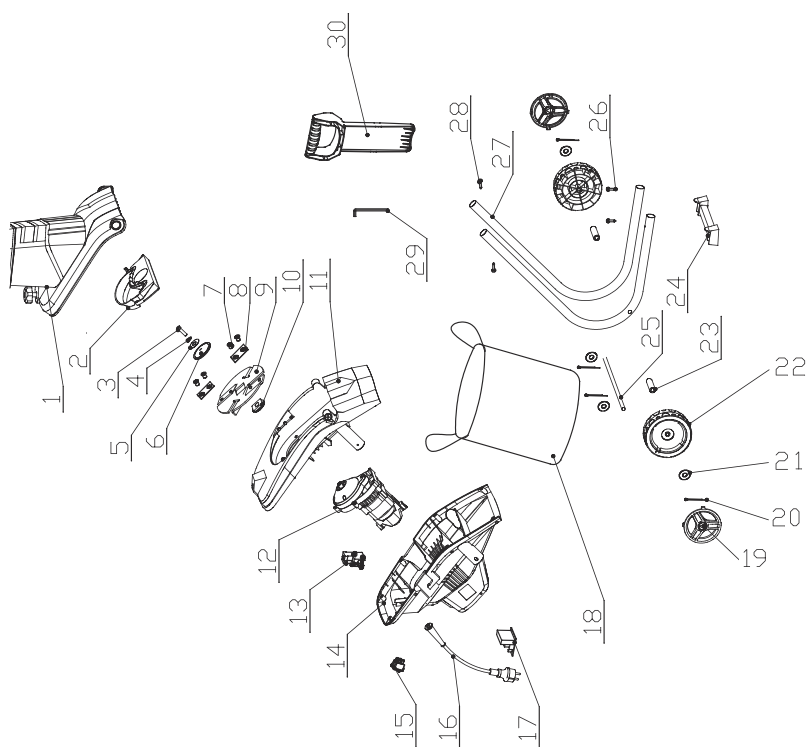
1. Disconnect the shredder from the mains before carrying out any servicing or cleaning operations.
2. Clean the exterior of the shredder using a moist cloth. Use only mild cleaning agents, never solvents or corrosive chemicals.
3. Never wash the shredder using a pressure washer or hosepipe. Prevent water get into the machine.
4. Disconnect the shredder from the mains and store it in a dry and dust-free area and out of the reach of children whenever it is not to be used for an extended period.
5. Remove the four socket head screws (21) that hold the blade housing cover (22), using the included hex key.
6. Remove the cover and clear away any debris from around the blade (23) so that it can rotate freely.
7. Take out the old blade and install the new blade.
8. Refit the blade cover and screw it securely into place.

TROUBLESHOOTING CHART

1. Disconnect the shredder from the mains before carrying out any servicing or cleaning operations.
2. Clean the exterior of the shredder using a moist cloth. Use only mild cleaning agents, never solvents or corrosive chemicals.
3. Never wash the shredder using a pressure washer or hosepipe. Prevent water get into the machine.
4. Disconnect the shredder from the mains and store it in a dry and dust-free area and out of the reach of children whenever it is not to be used for an extended period.

| Symptom | Possible Cause (s) | Corrective Actio |
|---|--|--|
| The shredder doesn't start. | <ol style="list-style-type: none">1. Is the plug securely connected to the socket?2. Is the wall socket energized?3. Has the motor overload cut-out tripped?4. The collection box release catch/safety switch is not in position. | <ol style="list-style-type: none">1. Make sure the plug is firmly connected to the socket.2. Check the RCD.3. Refer to the motor overload cut-out section for instructions about resetting it.4. Check that the collection box release catch/safety switch is all the way up. |
| The material in the hopper is not feeding down. | <ol style="list-style-type: none">1. Blade drum is running in wrong direction.2. The collection box is full. | <ol style="list-style-type: none">1. Check that the blade drum is rotating in the right direction (refer to the Reversing the blade to clear jams section).2. Empty the collection box. |
| The shredded material comes out in chains. | <ol style="list-style-type: none">1. The pressure plate is not in correct position. | <ol style="list-style-type: none">1. Adjust the pressure plate (refer to the Adjusting the pressure plate section) |

PARTS DIAGRAM



PARTS LIST

| No | Product name | QTY | Code |
|----|--------------------|-----|--------|
| 1 | Hopper Assembly | 1 | 908561 |
| 2 | Deflector Assembly | 1 | 908562 |
| 3 | Bolt M8*30 | 1 | 908563 |
| 4 | Elastic pad | 1 | 908564 |
| 5 | Flat pad | 1 | 908565 |
| 6 | Press block | 1 | 908566 |
| 7 | Countersunk head | 4 | 908567 |
| 8 | Blade | 2 | 908568 |
| 9 | Cutter | 1 | 908569 |
| 10 | Transmission block | 1 | 908570 |
| 11 | Upper housing | 1 | 908571 |
| 12 | Motor assembly | 1 | 908572 |
| 13 | Switch box | 1 | 908573 |
| 14 | Lower fuselage | 1 | 908574 |
| 15 | Switch on/off | 1 | 908575 |

| No | Product name | QTY | Code |
|----|----------------|-----|--------|
| 16 | Power cord | 1 | 908576 |
| 17 | PCB | 1 | 908577 |
| 18 | Collection bag | 1 | 908578 |
| 19 | Wheel cover | 2 | 908579 |
| 20 | Pin | 4 | 908580 |
| 21 | Flat pad | 6 | 908581 |
| 22 | Wheel | 4 | 908582 |
| 23 | Sleeve | 2 | 908583 |
| 24 | Foot pad | 1 | 908584 |
| 25 | Wheel axle | 1 | 908585 |
| 26 | ST 5*35 | 2 | 908586 |
| 27 | Support pipe | 1 | 908587 |
| 28 | ST 5*25 | 2 | 908588 |
| 29 | Spanner | 1 | 908589 |
| 30 | Cleaning rod | 1 | 908590 |

LIMITED WARRANTY

KEEP YOUR RECEIPT: Proof of purchase will be required to substantiate any warranty claim.

WHAT IS COVERED: AIVOLT Corp. warrants to the original retail purchaser that this product is free of defects in material and workmanship and agrees, at AIVOLT Corp's direction, to either repair, provide replacement parts for, or replace (without charge for parts or labor) any product or component with a material defect for a period of 2 years from the date of purchase, except as limited below. Warranty service and replacement parts are warranted only for the duration of the warranty on the original product. All replaced parts or products become a property of AIVOLT Corp.

How to Obtain Warranty Service

Please email our Customer Service Dept.
aivolt.official@gmail.com

Please have necessary information available - Model Number, Serial Number, Proof of Purchase

